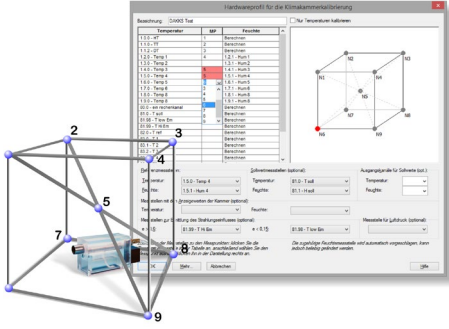
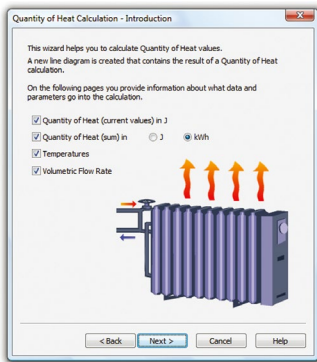


Assistant for the calibration of climate chambers



- Calibration according to guideline DAkkS-DKD-R 5-7
- Support of methods A and B with 9 and more measuring points
- Fully automatic calibration over any number of temperature and humidity steps with stability criterion
- Direct integration of climate chambers (Weiss/Vötsch, CTS, Memmert, Binder, ESPEC, ATT and Feutron) for setpoint specification and measured value recording
- Online visualization of the calibration process for all measuring points
- Calculation of the local humidity at the temperature measuring points, taking air pressure and dew point into account
- Additional support for dew point mirrors from MBW, DewMaster, DewTrans and Michell
- Automatic creation of a complete Excel report with all measured values, measurement uncertainties and measurement uncertainty budgets
- Excel report template can be easily customized by the user to suit their needs

Thermal quantity wizard



- The thermal quantity is calculated automatically from the volume flow and the temperature difference.
- You can enter settings easily and conveniently using the wizard.
- Data tables for water are included in delivery; users can define their own extensions for other media themselves.
- The thermal quantity can be calculated in real time or on the basis of existing measured value files.

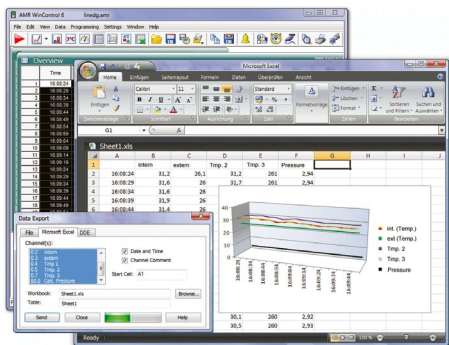
$$\delta Q = c_v \cdot m \cdot dT$$

Password protection



- Thanks to the integrated user management system, unauthorized access to AMR WinControl is impossible. This policy reduces the security risks to a minimum.
- Every change of user is logged in the events list for subsequent evaluation.
- Access rights can be defined individually per user or can be copied.
- Authentication can be done as WinControl user or Windows user (local or Active Directory). Windows groups are supported.
- Access limitations can be defined for every single program feature.
- Alarm confirmations can be assigned unequivocally to particular users.
- The password protection is the minimum requirement for the system validation according to FDA 21 CFR Part 11.

Data Export:



- The data files can be, Online and/or at any later point in time, stored in the following formats Excel (XLS / XLSX), ASCII (TXT / CSV), WK1, FAMOS, QS-STAT, DIAdem.
- With ODBC measured data can be exported in SQL databases (structured query language). This supports all data sources for which an ODBC driver is installed and set up on the system.
- The line and XY diagrams and the tables can be copied to the clipboard and, for example, be inserted into a protocol text.
- Via dynamic data exchange (DDE) it is possible to transfer measured values Online to other applications, for example MS-EXCEL.
- Furthermore, line diagrams can be embedded into text documents (e.g. a MS Word document) via the OLE function.